

CHILDREN AND EDUCATION SCRUTINY COMMITTEE	AGENDA ITEM No. 5
13 JANUARY 2020	PUBLIC REPORT

Report of:	Wendi Ogle –Welbourn, Executive Director, People and Communities	
Cabinet Member(s) responsible:	Cllr Lynne Ayres Cabinet member for Children’s Services, Education, Skills and the University	
Contact Officer(s):	Jo Procter, Head of Service- Cambridgeshire & Peterborough Safeguarding Boards	863765

CAMBRIDGESHIRE & PETERBOROUGH SAFEGUARDING CHILDREN BOARD ANNUAL REPORT 2018-19

R E C O M M E N D A T I O N S	
FROM: Russell Wate QPM – Chair of Cambridgeshire & Peterborough Safeguarding Children Partnership Board	Deadline date: N/A
It is recommended that the Children and Education Scrutiny Committee receive and note the content of the annual Cambridgeshire and Peterborough Safeguarding Children Board Annual 2018-2019 report	

1. ORIGIN OF REPORT

1.1 The report is submitted to the Children and Education Scrutiny Committee following sign off and publication of the Cambridgeshire and Peterborough Safeguarding Children Partnership Board Annual Report 18/19 in October 2019.

There is a statutory requirement under the Children & Social Work Act 2017 that Safeguarding partners publish an annual report detailing the work of the Board.

2. PURPOSE AND REASON FOR REPORT

2.1 The purpose of the report being brought to the Children and Education Scrutiny Committee is to ensure members are fully aware of the work and progress of the Cambridgeshire and Peterborough Safeguarding Children Partnership Board.

The report covers the period from April 2018-March 2019 and was published in October 2019.

2.2 This report is for the Children and Education Scrutiny Committee to consider under its Terms of Reference Part 3, Section 4 - Overview and Scrutiny Functions, paragraph No. 2.1 Functions determined by Council: Children’s Services including a) Social Care of Children; b) Safeguarding; and c) Children’s Health.

2.4 *How does this report link to the Corporate Priorities*
This report directly relates to the safeguarding of children in Peterborough

- 2.5 *How does this report link to the Children in care Pledge?*
 The report covers the safeguarding of children and young people. It contributes to establishing how far the Council
- Meets its statutory responsibilities towards safeguarding looked after children

3. TIMESCALES

Is this a Major Policy Item/Statutory Plan?	NO	If yes, date for Cabinet meeting	
Date for relevant Council meeting if applicable		Date for submission to Government Dept. <i>(Please specify which Government Dept.)</i>	

4. BACKGROUND AND KEY ISSUES

- 4.1 The annual report includes information on the work that has been undertaken by the Cambridgeshire and Peterborough Safeguarding Children Partnership Board in the period April 2018- March 2019.

Partner agencies, including Peterborough City Council, contributed to the information contained within the annual report.

The annual report highlights the significant events during the last year, summarises both the work of the Safeguarding Children Board and the work of the sub committees. It highlights areas of good practice and presents statistical information about safeguarding performance.

The annual report was approved by the Safeguarding Children Partnership Board in October 2019 and was subsequently published on the Boards website (www.safeguardingcambspeterborough.org.uk) and shared on social media.

Members are requested to note the contents of the report

5. CONSULTATION

- 5.1 Partner agencies, including Peterborough City Council, contributed to the information contained within the annual report.

6. ANTICIPATED OUTCOMES OR IMPACT

- 6.1 The annual report highlights the significant events during the last year, summarises both the work of the Safeguarding Children Partnership Board and the work of the sub committees. It highlights areas of good practice and presents statistical information about safeguarding performance.

The report has been brought to the Children and Education Scrutiny Committee for information purposes.

7. REASON FOR THE RECOMMENDATION

- 7.1 There are no recommendations for the Committee to consider – the report is for information only

8. ALTERNATIVE OPTIONS CONSIDERED

- 8.1 There was no reason to consider alternative options. It is a statutory responsibility of the Safeguarding Children Partnership Board to produce an annual report.

9. IMPLICATIONS

Financial Implications

9.1 There are no financial implications arising from the report

Legal Implications

9.2 There are no legal implications arising from the report

Equalities Implications

9.3 There are no equalities implications arising from the report

Rural Implications

9.4 There are no rural implications arising from the report

Carbon Impact Assessment

9.5 *n/a*

10. BACKGROUND DOCUMENTS

Used to prepare this report, in accordance with the Local Government (Access to Information) Act 1985

10.1 The majority of statistics contained within the annual report are from the Safeguarding Children Partnership Board dataset.

Partners provided information (including data) from their agencies which was used to formulate the annual report.

11. APPENDICES

11.1 Appendix 1 – Cambridgeshire and Peterborough Safeguarding Children Partnership Board Annual Report 18/19



Foreword

BY DR RUSSELL WATE QPM, INDEPENDENT CHAIR CAMBRIDGESHIRE AND PETERBOROUGH SAFEGUARDING PARTNERSHIP



It gives me great pleasure to present to you the Cambridgeshire and Peterborough's Safeguarding Children Board annual report for the period April 2018 – March 2019. The report outlines both the activity and the contribution of the Board and its partners that has taken place during the last year. There have been numerous changes and restructures in all of our key agencies including both local authorities, the police and aspects of health agencies. It is a real testimony to the high regard that agencies have for safeguarding that this is always at the forefront of their changes, the want to continue to protect our children and young people. I would like to thank all of the Board members, and their organisations, especially the front-line staff, for the hard work they have carried out to keep children and young people safe from harm in Cambridgeshire and Peterborough.

The purpose of these local arrangements as stated in Working Together 2018 is to support and enable local organisations and agencies to work together in a system where:

- children are safeguarded and their welfare promoted
- partner organisations and agencies collaborate, share and co-own the vision for how to achieve improved outcomes for vulnerable children
- organisations and agencies challenge appropriately and hold one another to account effectively
- there is early identification and analysis of new safeguarding issues and emerging threats
- learning is promoted and embedded in a way that local services for children and families can become more reflective and implement changes to practice
- information is shared effectively to facilitate more accurate and timely decision making for children.

You will see in the report that we have worked well through our priorities for the year. Some of these priorities we share with our partner boards, for example we have and continue to work very closely with the Countywide Community Safety Partnership. This ensures no duplication and that we support each other's work going forward.

Within the time period covered by this report we have not published a Serious Case Reviews (SCR) but we have been working on a number during the year that will be published in the next reporting period. We have already in these cases embedded the learning that has arisen from the review.

The Children and Social Work Act 2017 and the publication of Working Together 2018, meant that we have had to think how we do things differently as Safeguarding boards, change to be called multi-agency partnerships, with these arrangements having to be published by the end of June 2019. I am pleased to say that the board and its partners have already put in place plans for these changes. We have already combined the safeguarding children boards for both areas. We have put in place an Executive Board.

In the last year a lot of activity has taken place on implementing a partnership Child Sexual Abuse strategy. To help to launch and implement these we held a very successful conference in the spring of 2018. Our challenge now is to make sure these are embedded further in our front-line practitioners' daily work.

Finally, I would like to thank Jo Procter and all of her team for their unstinting commitment to the work of the Board and keeping children in Cambridgeshire and Peterborough safe.

A handwritten signature in blue ink, appearing to read 'RW'.

Dr Russell Wate QPM

Table of Contents

<u>FOREWORD</u>	5
<u>ABOUT THE BOARD</u>	7
<u>LEADERSHIP AND GOVERNANCE</u>	8
<u>CAMBRIDGESHIRE AND PETERBOROUGH SAFEGUARDING PARTNERSHIP BOARDS</u>	9
<u>INDEPENDENT SAFEGUARDING PARTNERSHIP SERVICE</u>	10
<u>WORK OF THE SAFEGUARDING BOARD</u>	11
<u>QUALITY EFFECTIVENESS GROUP (QEG)</u>	12
<u>CHILD EXPLOITATION</u>	12
<u>Missing, Exploited and Trafficking (MET) Hub</u>	12
<u>CCE Strategic Task and Finish Group</u>	13
<u>Exploitation Training and community events</u>	13
<u>Future Developments</u>	13
<u>MULTI AGENCY TRAINING AND DEVELOPMENT</u>	13
<u>Single Agency Training</u>	14
<u>RAISING AWARENESS OF THE ROLE OF THE CSPB AND SAFEGUARDING ISSUES ACROSS COMMUNITIES</u>	14
<u>LEARNING CULTURE</u>	15
<u>THE SERIOUS CASE REVIEW GROUP</u>	16

*The lady really listened to me, lots of people heard
my story before but no one had listened*

Quote from a young person

About the Board



Leadership and Governance

Legislatively there have been a number of changes within the safeguarding arena for both children and adults at risk:

- The Children and Social Work Act 2017, brings in Working Together 2018 that abolishes Local Safeguarding Children Boards and provides new ways of working in partnership
- The Care Act 2014 has established the need to have Safeguarding Adult Boards in each local authority Area

The changes of the legislative acts coupled with ongoing demands and a need for increased joint working between the two local authorities across the County of Cambridgeshire and the City of Peterborough, have led to a joint Children’s Board and a joint Adult’s Board.

Legislation indicates that each board should have three statutory partners with a shared and equal duty to make arrangements to work together to safeguard and promote the welfare of all children and safeguarding adults at risk in a local area. The new arrangements bring together the statutory safeguarding partners (Health (CCG), Police and local authority) to form an Executive Safeguarding Partnership Board. The structure combines the governance arrangements at a senior level to look at safeguarding arrangements holistically across both the children’s and adults safeguarding arena

Bringing together adults and children’s safeguarding on a countywide level ensures that safeguarding issues are looked at holistically in a “think family approach” and also provides a forum for transitional arrangement’s to be discussed and agreed

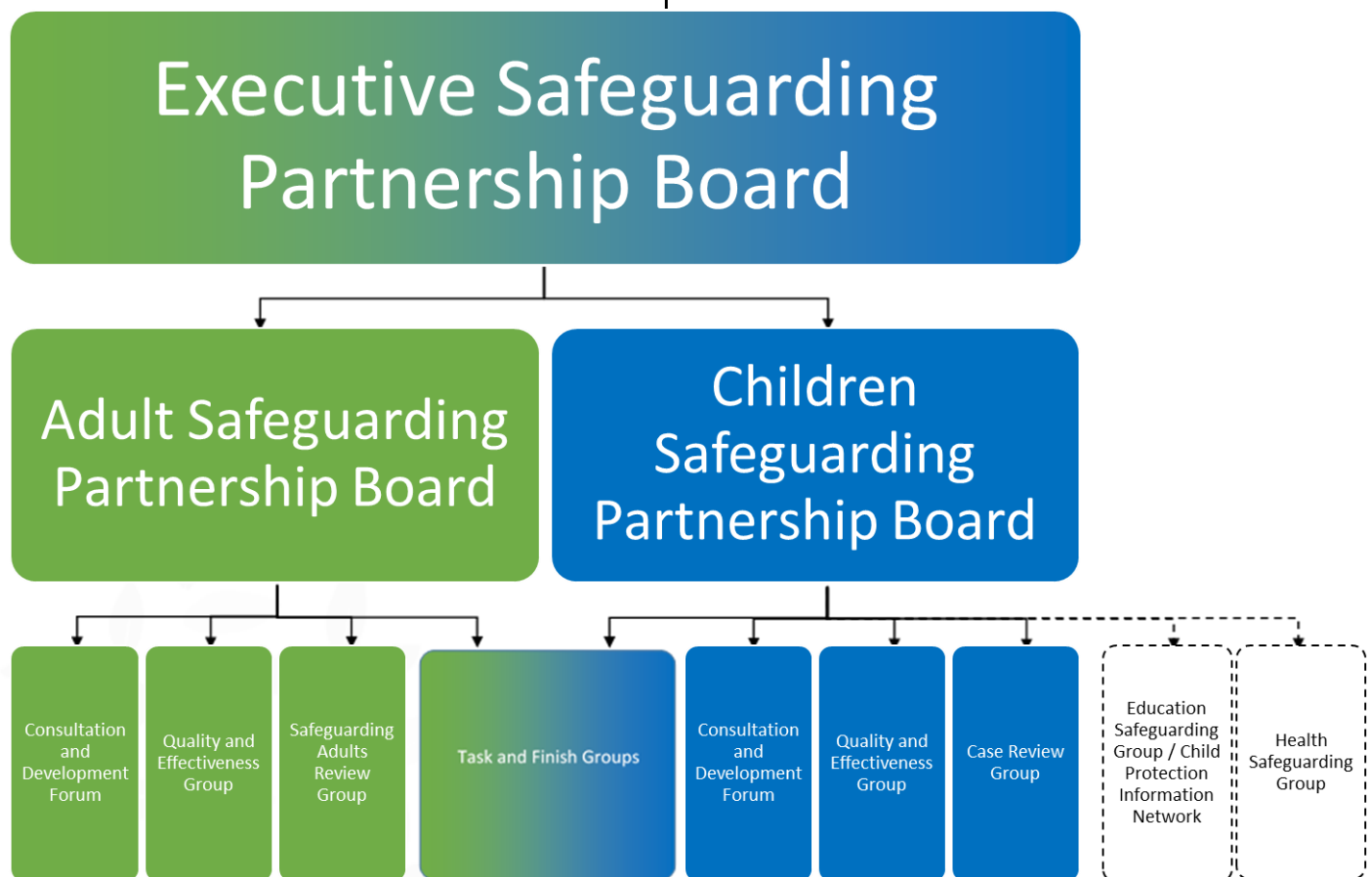


Figure 1: Diagram of Cambridgeshire and Peterborough safeguarding partnership structure

The Executive Safeguarding Partnership Board has strong and meaningful links with other groups and boards who impact on child and adult services. The safeguarding arrangements have been established in the context of wider statutory partnership arrangements that are in place across Cambridgeshire and Peterborough. The relationships have been strengthened by the implementation of an Inter Board protocol and a comprehensive mapping of themes. This ensures that all aspects of safeguarding are taken into account by the other statutory boards and there is a co-ordinated and consistent approach to safeguarding vulnerable people.

The Chair of the Executive Safeguarding Partnership Board is also a member of other strategic and statutory partnerships within Cambridgeshire and Peterborough which include the Health and Wellbeing Board, the Community Safety Partnerships and the MAPPA Strategic Management Board. They also chair the MASH Governance Board. In addition, the Head of Service for the Safeguarding Partnership Boards is a member of the Domestic Abuse Governance Board and the Children and Families Joint Commissioning Board.



Cambridgeshire and Peterborough Safeguarding Partnership Boards

The two Safeguarding Partnership Boards (adults and children's) sit below the Executive Safeguarding Partnership Board (see Figure 1). The Safeguarding Partnership Boards are responsible for progressing the Executive Safeguarding Partnerships Board's business priorities through the business plan; authorising the policy, process, strategy and guidance to effectively safeguard children and adults at risk. The two Safeguarding Partnership Boards scrutinise, challenge and maintain an overview of the state of children's and adults safeguarding in Cambridgeshire and Peterborough; undertaken through quality assurance activity, learning and development programmes and commissioning and overseeing Child Safeguarding Practice Reviews / Safeguarding Adult Reviews / multi-agency reviews (as required.) The Safeguarding Partnership Boards have wider partner membership to include probation, health providers, education, voluntary sector, faith communities and housing.

Below the two (adults and children's) Partnership Safeguarding Boards are a range of sub groups and task and finish groups. These groups are responsible for a range of areas, including policies, training, consultation and quality assurance. The function of these groups are detailed below.

- Two consultation and development forums (one for adults and one for children's) responsible for securing the "voice" of practitioners and ensuring that learning is used to inform and improve practice. These groups have wider partner membership to include probation, health providers, education, voluntary sector, faith communities and housing.
- Two Quality and Effectiveness Groups (QEG), one for adults and for children's. Chaired by the Head of Service for the

Safeguarding Partnership Boards, the group's membership includes senior managers from the safeguarding partners and other relevant agencies that have responsibility for safeguarding performance within their organisation. These groups scrutinise safeguarding effectiveness and co-ordinate improvement activity by; quality assurance activity (both single and multi-agency), performance management information and overseeing of action plans.

- A single countywide Children's Case Review Group, that examines children's cases and a countywide Safeguarding Adults Review group which deals with adult's case reviews.
- Task and finish groups are established to progress themed areas, e.g. child sexual abuse, criminal exploitation. Each group is responsible for producing resource packs for practitioners which include strategies/ guidance, training, leaflets and tools.

- The structure also includes those forums who have a "dotted line" to the Safeguarding Boards (Education Safeguarding Group, Child Protection Information Network).

Independent Safeguarding Partnership Service

The work of the various Boards and groups within the governance arrangements is overseen by the Independent Safeguarding Partnership Service. The service is managed by the Head of Service and includes roles that cover both adults and children's agendas. Some of the roles are specialised in quality assurance and improvement, exploitation, training, communication and there are more general adult and children's leads and dedicated administrative roles. The service ensures that there is robust, countywide independent scrutiny and oversight of multi-agency practice.

*I'm not as angry now as I used to be and I have
more friends*

Quote from a young person

Work of the Safeguarding Board



Quality Effectiveness Group (QEG)

Monitors the individual and collective effectiveness of the Children Safeguarding Partnership Board partners and has a strong quality assurance function undertaking audits, focus groups and surveys. The annual themed audit programme (quality assurance planner) includes both single and multi-agency audits and are linked to the board's priorities. QEG advises and supports the board in achieving the highest safeguarding standards and promoting the welfare of children in Peterborough and Cambridgeshire by evaluation and continuous improvement. During the twelve months covered by this report the following audits have taken place:

- **Child Sexual Abuse in the Family Environment Audit.** Examined 8 cases using the methodology of a Joint Targeted Area Inspection (JTAI) format for Cambridgeshire only.
- **Child Exploitation Audit.** 30 cases audited against a JTAI framework.
- **Cultural Competence Audit.** Dip sample of 20 cases audited against the initial audit tool and benchmarking exercise of 2015. Reviewed against initial findings.
- **Cambridgeshire Local Authority Designated Officer Audit.** 37 cases audited against an audit tool assessment.

At the conclusion of all audit activity a briefing is prepared highlighting the implications for safeguarding practice across all agencies in terms of roles and responsibilities for safeguarding children at risk of abuse and neglect.

If I was in trouble I would tell a police man or lady. They would catch the bad person
Quote from a young person

All of the audits have resulted in recommendations and learning for practice. Lessons learned from auditing have been and will continue to be cascaded through the Safeguarding Board Workshops during 2019 and professional briefings on the Safeguarding Board's website.

All of the audits have resulted in Action Plans and learning for practice cascaded through the safeguarding Board Workshops and professional briefings.

Additionally, QEG reviewed and monitored single agency performance in relation to safeguarding children and young people within the quarterly performance report, contributed to by all partner agencies. For 2019, this process has been strengthened and partners will be required to present a report and have a discussion regarding individual performance relating to the board's priorities for 2019 – 2020.

Child Exploitation

Significant changes have taken place to include wider child criminal exploitation (CCE) across both authority areas.

The focus has not gone from Child Sexual Exploitation (CSE) but there is now a pressing need to ensure all our processes and policies incorporate Gangs and County Lines.

Extensive mapping has taken place across both authority areas to understand the scale of the issue, combine multi-agency intelligence and information and implement response plans appropriate to the risk identified.

The statutory safeguarding referral form has undergone a complete refresh to simplify the information required and in the case of CCE or CSE being identified will link users through to complete the Risk management Tool.

The tool is used to populate the Missing and Child Exploitation (MACE) tracker in the case of Cambridgeshire and "liquid logic" in the case of Peterborough. This information is in turn used to drive business at MACE Operational meetings.

Missing, Exploited and Trafficking (MET) Hub

The MET hub now sits across both authority areas

There is now a broader understanding of themes and trends effecting the whole county and this single document is used as the driver for activity at MACE Operational Groups.

All children deemed to be at “significant” risk are discussed and plans scrutinised to ensure that every opportunity is taken to reduce that risk.

*They helped me to go back and live with my
mum and dad*

Quote from a young person

CCE Strategic Task and Finish Group

The group has been developed to replace the CSE Strategic Group and is currently redeveloping the separate CSE and CCE Strategy into a single working strategy.

The group are focussing on what “offers” are in place at each specific risk level identified by the Risk Management Tool and will seek to close any gaps identified. This piece of work will establish an agreed “core” offer of services across the partnership.

Exploitation Training and community events

Our training offer has undergone a complete overhaul to now incorporate “Gangs and County Lines”

Community Events have taken place across the county predominantly in the evenings to capture the widest audiences possible. The purpose of the events is to provide parents and carers with relevant and up to date information to give them an understanding of issues faced by children and signpost them to specific information.

Future Developments

The wider partnership has been successful in a number of areas to secure funding to tackle wider exploitation and ensure focus at every level of risk identified.

Work is continuing to develop specific teams to work with those children deemed at “significant risk” and we await a response if we have been successful with our funding bid to work with children deemed to be at “emerging” risk. This work will also include parents and carers.

Multi Agency Training and Development

The Cambridgeshire and Peterborough Children Safeguarding Partnership Board continues to provide a comprehensive and highly regarded multiagency safeguarding children training programme. Additional resources including: leaflets, briefings, e learning links, Apps and training packages are available on the CPCSPB website for professionals, parents and children. Safeguarding Board Training is monitored and reviewed within the Quality Effectiveness Group and for 2019 this function and role will move to the Training Subgroup.

Over the twelve months from January 2018 to December 2018, 1,986 professionals attended the Children’s Safeguarding Board training.

Workshops. It is a priority of the children Quality Effectiveness Group (QEG) that workshops on the latest themes and lessons learned should be facilitated by the CPCSPB on a termly basis. Specialist Training Workshops are a conduit for sharing safeguarding information, localised experiences, networking and are highly regarded by practitioners as an ‘excellent’ training resource. Workshops to date have included:

- **Lessons learned workshops.** Themes from recent multi-agency audits and findings from serious case reviews were presented and discussed. Four workshops took place during September 2018, with 108 practitioners and managers attending.
- **Effective Support (Threshold Document) workshops.** Both Cambridgeshire and Peterborough share the same threshold document for exploring how to support children and families effectively in terms of; sign posting, early help and child protection. The Effective Support document was launched at the end of 2018 with seven workshops taking place and 297 practitioners attending.
- **The Lived Experience of the Child.** During the safeguarding board auditing activity and within local serious case reviews (SCR) of 2018, a repetitive theme of ‘the voice of the

child' was consistently found to be omitted from; risk analysis, assessments, referrals and plans. A task and finish group was set up to develop practitioner guidance and a training pack. The pack and guidance was launched via 7 workshops that took place at the start of April 2019. 173 professionals attended.

Training Sessions. Training sessions during 2018 were evaluated highly by professionals with 99 % rating, both the delivery of the training and the aims and learning outcomes of the training as being 'good to excellent'.

Salient comments from attendees include

- *The context of real life cases was helpful*
- *Excellent multi-agency training. Learned a lot from the training and of the other professionals attending*
- *Main message that I think I have always taken back with me is "to have professional curiosity" this itself makes one be suspicious and look further into other family members notes, etc.*

In terms of impact of the training on practice 83% of practitioners felt that they had learned a lot and that 89% felt that the training was completely relevant to their safeguarding role.

- **Confidence** - 92% of attendees felt that after the training their confidence had improved.
- **Knowledge**- 96% of attendees felt that after the training their knowledge had improved
- **Skills and Practice**- 93% of attendees felt that after the training their practice skills had improved

Conference. One of the major learning points from two serious case reviews across the region was on the theme of child sexual abuse. As a result of those findings the LSCB developed a child sexual abuse strategy and relaunched the promotion of the inclusion of the 'brook traffic light tool' to help practitioner assessments. To launch the strategy and training pack along with the lessons learned a conference was held at the Deaf Blind UK centre in June 2018 titled 'Child Sexual Abuse'. 138 professionals attended. Feedback from the event included:

- *"Thank you this was an excellent conference. Excellent speakers."*
- *"Outstanding conference. I learn a lot of useful tips I will be able to incorporate into my professional attitude towards CSA and related factors."*

Single Agency Training

CPCSPB has a duty to ensure that single agency safeguarding children training is; robust, up to date with the latest research and lessons learned and is fit for purpose, to ensure that the children's workforce is well equipped, informed and trained to deal with safeguarding issues for children and young people. During the year 4 courses have been validated successfully.

Raising awareness of the role of the CSPB and safeguarding issues across communities

Promoting awareness is an ongoing activity held throughout the year by the board and its members.

Over the past 12 months, the Safeguarding Board website has been further developed to include new briefings and resources for practitioners, updated guidance and can be translated into over 100 different languages in order to provide accessible information to all communities across Cambridgeshire and Peterborough.

All children can be abused even if you are rich

Quote from young person

The safeguarding board also continues to use social media to raise awareness of the work of the board and share messages of local and national importance.

February 2019 was Safeguarding Awareness Month for both the Children and Adults Boards focused on raising the awareness of the general public, we included messages about:

- What is safeguarding?
- signs of abuse
- how to make a referral

- public information – leaflets, websites and signposting to appropriate services
- What is an Adult Safeguarding Partnership Board / Children Safeguarding Partnership Board?

Who would I go to if I wanted to feel safe – my mum, my friends and my teacher
Quote from a young person

A communications strategy and tactical plan was developed, building the campaign around social media messages with other activities taking place to complement it. The strategy also formed the basis of the awareness month resource pack which included:

- Banners for Email footer, Newsletter
- Social Media assets
- Leaflets, postcard & posters
- Hashtags
- Social Media messages



A whole host of agencies took part in Safeguarding Awareness Month, to raise awareness, by producing a short film giving safeguarding messages, having information stands and holding drop in events.

Within the Board, there was:

- The community survey, extended to include safeguarding awareness month to gather as many responses as possible.
- Requests for radio interviews by the local media
- Creation of safeguarding easy carry cards and posters for staff and the general public
- Facebook and Twitter had a new message each day throughout the month on safeguarding. For **Facebook** the message with the biggest reach (**3880 users**) was “We all have a role to play in protecting children, young people and adults at risk from abuse and neglect. But right now, some people do not report concerns. Help us to help those in need of support and speak up about abuse”. This was also the most successful message for **Twitter** with a reach of **5256 users**.

Over the month we reached 76,725 users via social media, and from twitter polls ascertained that 91% of respondents said that safeguarding was everyone’s responsibility and 71 % of the general public knew what the children and adults board’s do.

Learning Culture

The Children Safeguarding Partnership Board (CSPB) and the Adult Safeguarding Partnership Board (ASPB) create a culture of openness and facilitate effective and regular challenge to all partner agencies. The Boards do this by the Independent Safeguarding Partnership Service (ISPS) reviewing, scrutinising and challenging local safeguarding arrangements. Findings from Serious Case Reviews / Safeguarding Adult Reviews and auditing activity are cascaded back to practitioners and agencies to embed the learning back into practice. The chart below shows how the ASPB and the CSPB identifies learning as part of evidence informed practice.

Learning Framework

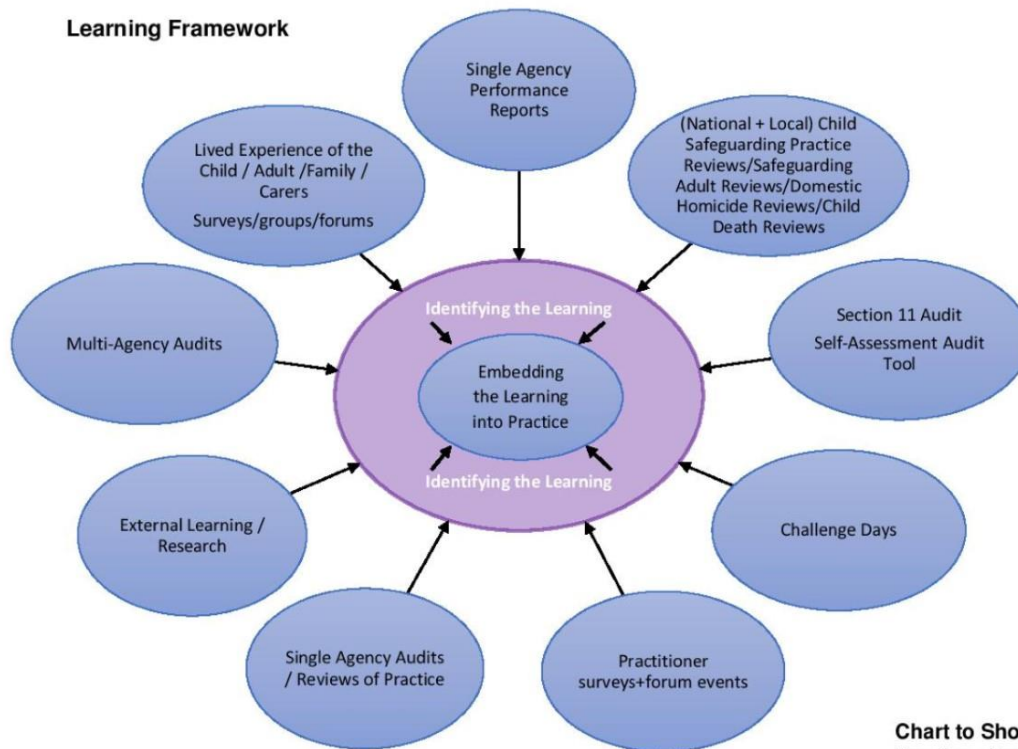


Chart to Show: Evidence Based Practice : How Cambridgeshire and Peterborough Children and Adult Boards Identifies Learning

The Serious Case Review Group

The overall purpose of the group is to consider cases and determine whether a Serious Case Review should be undertaken and ensure that key learning is effectively disseminated. Serious Case Reviews are undertaken where:

1. abuse or neglect of a child is known or suspected; and
2. either –
 - a. the child has died; or
 - b. the child has been seriously harmed and there is cause for concern to the way in which the authority, their Board partners or relevant persons have worked together to safeguard the child.

In line with Working Together to Safeguard Children (2015), all reviews of cases meeting the SCR criteria should result in a report which is published and readily accessible on the LSCB's website for a minimum of 12 months. Thereafter, the report should be made available on request. This is important to support national sharing of

lessons learnt and good practice in writing and publishing SCRs.

There were no Serious Case Reviews published during the year, but a Multi Agency Learning Review was published. There have been Serious Case Reviews commissioned which will be published in 2019, outside of the timescale of this annual report. . These will be reported on in the next annual report. When reports are published and where referrals do not meet the criteria for a Serious Case Review we implement learning through training and workshops, this happened in 2018 and we continue to do so in 2019.

Also as a direct result of the learning from the reviews The Effective Support for Children and Families in Cambridgeshire and Peterborough (thresholds) document, the Referral form, Resolving Professional Differences (Escalation Policy) the CSA (Child Sexual Abuse) strategy, the Neglect strategy were all reviewed and updated with Partner Agency involvement, together with the promotion of the use of the Brook Traffic Light tool during 2018.



Cambridgeshire and Peterborough Safeguarding Children Board

Sandmartin House
Fletton Quays
Peterborough
PE1 1FZ
01733 863744

5 George Street
Huntingdon
Cambridgeshire
PE29 3AD
01480 373522

safeguardingboards@cambridgeshire.gov.uk



This page is intentionally left blank